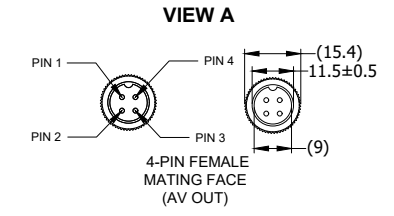
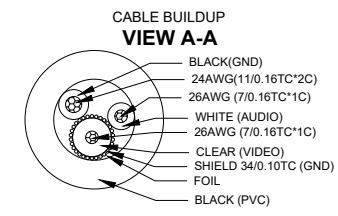
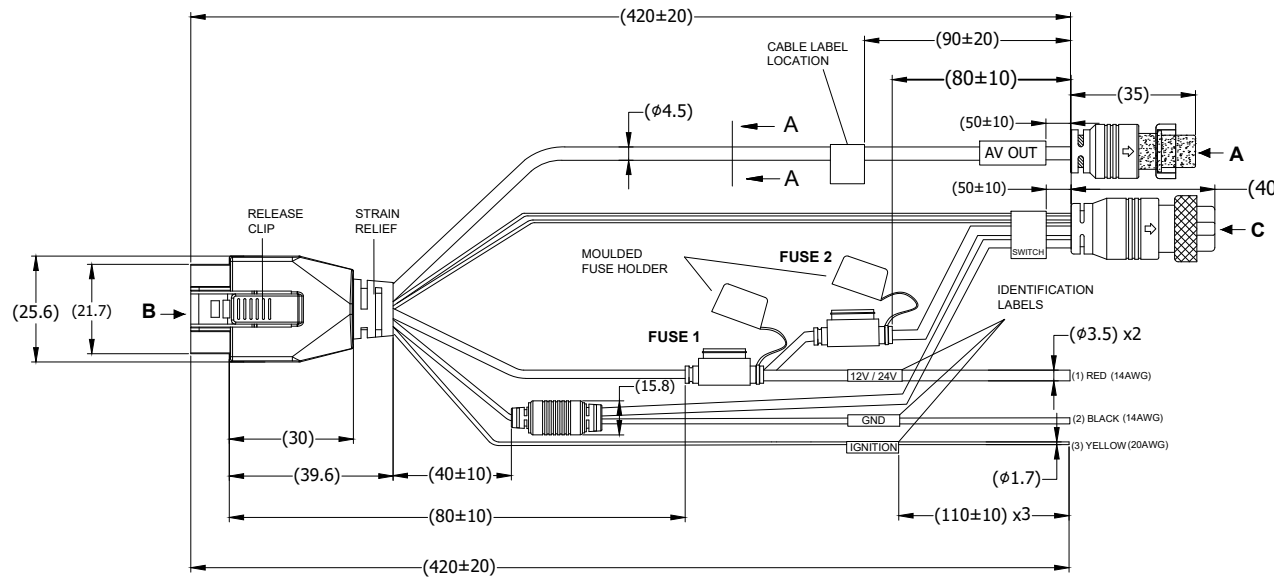
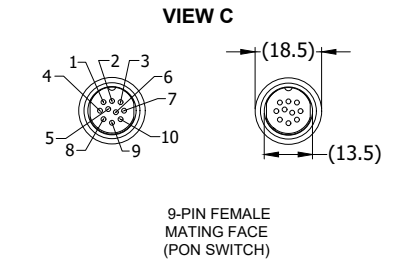
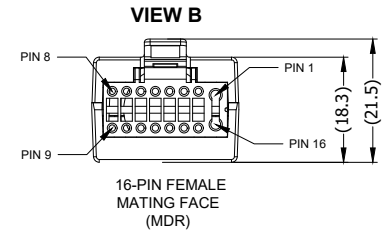


Revision Notes				
R1 - 14 AWG CABLE DIAMETER CHANGED TO 3.5MM. 14 AWG CABLE LABEL CHANGED TO GND LABEL AS PER CR-A739.				
APA: C. LI	Drawn: A. KEBEDE	Checked: S. ZHANG	Approved: R. PENTLEY	Date: 28/05/2020



VIEW-A 16-PIN FEMALE MATING FACE (MDR) PIN# - (AWG)	VIEW-B 4-PIN FEMALE MATING FACE (AV OUT) PIN# - (AWG)	VIEW-C 9-PIN FEMALE MATING FACE (PON SWITCH) PIN# - (AWG)	WIRE COLOUR	DESCRIPTION
1 (16AWG)	-	1 (16AWG)	RED	DC IN+ (12/24V)
2 (20AWG)	-	2 (16AWG)	RED	DC IN+ (12/24V)
3 (20AWG)	-	-	YELLOW	IGNITION
4 (20AWG)	-	4 (20AWG)	PINK	+12V
5 (24AWG)	2 (24AWG)	-	BLACK	GND
6 (26AWG)	4 (26AWG)	-	CLEAR	VIDEO
7 (26AWG)	3 (26AWG)	-	WHITE	AUDIO
8 (NC)	-	-	-	-
9 (NC)	-	-	-	-
10 (NC)	-	-	-	-
11 (20AWG)	-	5 (20AWG)	BLACK	GND
12 (NC)	-	-	-	-
13 (NC)	-	-	-	-
14 (NC)	-	-	-	-
15 (20AWG)	-	6 (16AWG)	BLACK	DC IN-
16 (16AWG)	-	7 (16AWG)	BLACK	DC IN-



**LABEL SPECIFICATIONS**

- ALL LABELS SHOULD BE WHITE/SILVER.
- ALL INK SHOULD BE BLACK.
- ALL TEXT PRINTED SHOULD BE 3MM.

**NOTES:**

- FOR LABELING AND AND PACKAGING DETAILS REFER TO MASTER BOM.
- 2 X 7.5A AND 2 X 15A FUSES ARE SUPPLIED. REFER TO INSTALLATION GUIDE FOR EACH PRODUCT TO DETERMINE THE CORRECT FUSE RATING.
- ANY CUSTOMER MODIFICATION OF THIS PRODUCT CAUSING SUBSEQUENT FAILURE IS NOT A LIABILITY OF BRIGADE ELECTRONICS GROUP PLC.

**PROPRIETARY NOTICE**

THIS DESIGN AND TECHNICAL INFORMATION APPEARING ON THIS DRAWING IS THE PROPERTY OF BRIGADE ELECTRONICS, AND IS DISCLOSED IN CONFIDENCE. IT IS NOT TO BE COPIED, REPRODUCED, REVEALED TO OR EXPROPRIATED BY OTHERS, EITHER IN WHOLE OR IN PART WITHOUT THE EXPRESS WRITTEN CONSENT OF BRIGADE ELECTRONICS.



Assembly Pl Approval C. LI	Approved by L. PILLAY	Checked by S. LAVER	Drawn by A. KEBEDE
Angle of Projection	Units mm	Scale N/A	Released 11/12/2019
Third Angle	Status RELEASED	Assembly Ref IP-EM-PC	
	Part No 5864	BE-004264-01-19	